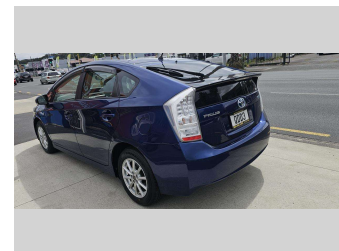
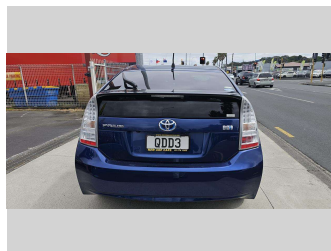
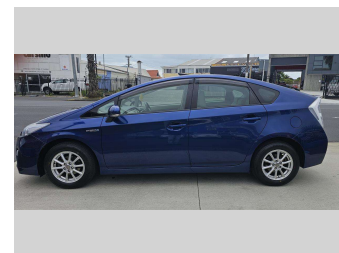
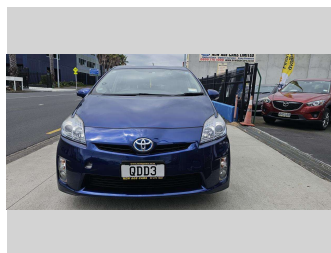
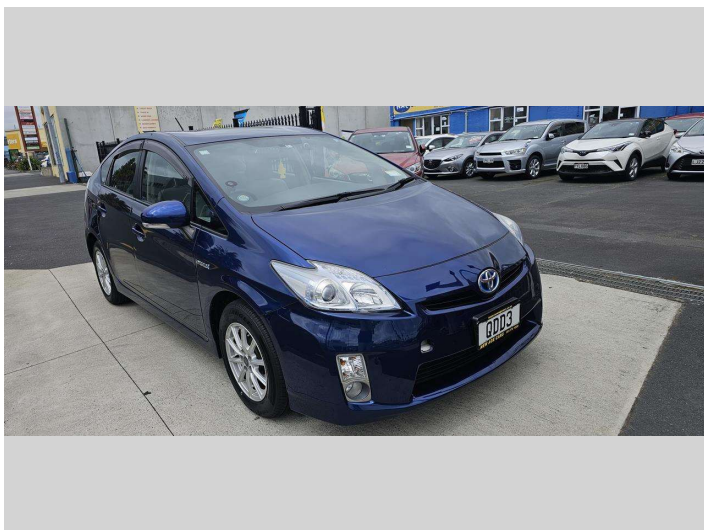



2010 Toyota Prius S




Purchase Price **\$11,990**
Includes GST, Registration & Licensing

Finance may be available on this vehicle. Ask one of our friendly staff for more information.



Gain peace of mind with Mechanical Breakdown Insurance. **Ask us how.**



- Top features**
- » 16 Valve
 - » 4 cylinder
 - » Alloy wheels
 - » Central Locking
 - » Child seat anchor poin...
 - » Climate Control
 - » Digital Display
 - » Electric Mirrors
 - » Electric retractable M...
 - » Electric Windows
 - » Immobiliser
 - » Remote Locking
 - » Reversing Camera

Body Style
5 door, Hatchback

Odometer
71,402 km

Engine
1797 cc, Hybrid Petrol

Fuel Type
Hybrid

Transmission
Auto, Front Wheel

Wheels
15", Custom Alloys

VIN
7AT0H637X23271907

Interior
Beige, Grey

Safety



Based on 2023 UCSR rating for 09-16 models

Reg No.
QDD3

Ext Colour
Blue

History
Ex-Overseas

Seats
5 seats, Fabric

CO2 Emissions
★★★★☆
98 grams/km

Energy Economy
★★★★☆

Annual fuel cost of \$1,650
4.2L per 100km

Cost per year is an estimate based on petrol price of \$2.80 per litre and an average distance of 14000 km. Emissions and Energy Economy figures standardised to 3P WLTP.

Stock ID: 691024



New Age Cars | Phone 09 2761000 | Email info@newagecars.co.nz
209 Great South Road, Opposite to Otahuhu Police Station, Otahuhu, Auckland
1062, New Zealand
www.newagecars.co.nz

