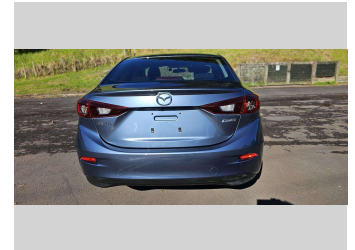
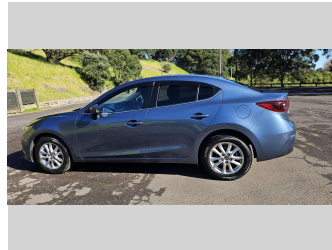
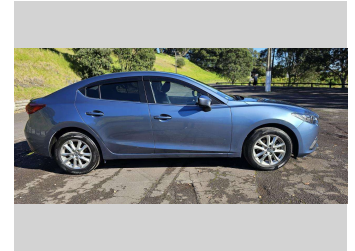
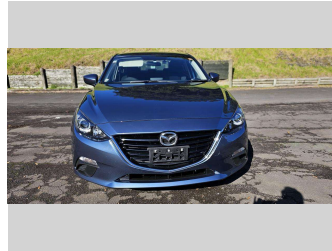


# 2014 Mazda Axela Hybrid



Purchase Price

**\$17,990**

Includes GST, Registration & Licensing

Finance may be available on this vehicle. Ask one of our friendly staff for more information.



Gain peace of mind with Mechanical Breakdown Insurance. **Ask us how.**



## Top features

- » 16 Valve
- » 4 cylinder
- » Alloy wheels
- » AUX/ USB Port
- » Central Locking
- » Child seat anchor poin...
- » Climate Control
- » Cruise Control
- » Digital Display
- » Electric Mirrors
- » Electric retractable M...
- » Electric Windows
- » Fog Lights
- » Immobiliser
- » Indicator on side mirr...
- » Informative Display
- » ISOFIX Seats
- » i-Stop

Body Style

**Sedan**

Odometer

**83,439 km**

Engine

**1997 cc, Hybrid Petrol**

Fuel Type

**Hybrid**

Transmission

**Auto, Front Wheel**

Wheels

**16", Factory Alloys**

VIN

**7AT0C13JX23103547**

Interior

**Black, BLACK**

Safety



Based on 2023 UCSR rating for 13-19 models

Reg No.

**QJY90**

Ext Colour

**Blue**

History

**Ex-Overseas**

Seats

**5 seats, Fabric**

CO2 Emissions

★★★★☆

**97 grams/km**

Energy Economy

★★★★☆

**Annual fuel cost of \$1,610**

**4.1L per 100km**

Cost per year is an estimate based on petrol price of \$2.80 per litre and an average distance of 14000 km. Emissions and Energy Economy figures standardised to 3P WLTP.

**Stock ID: 1405023**



New Age Cars | Phone 09 2761000 | Email info@newagecars.co.nz  
209 Great South Road, Opposite to Otahuhu Police Station, Otahuhu, Auckland  
1062, New Zealand  
www.newagecars.co.nz

