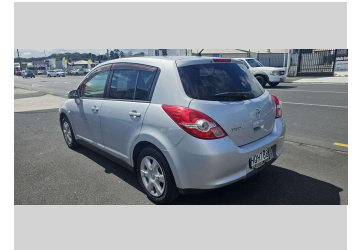
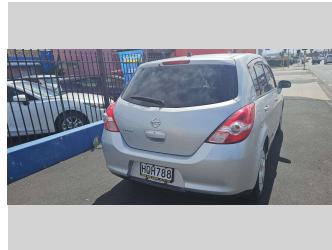
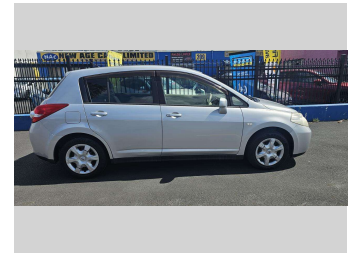
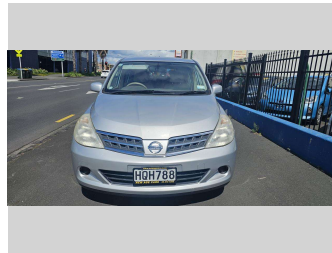



2009 Nissan Tiida




Purchase Price **\$8,990**
Includes GST, Registration & Licensing

Finance may be available on this vehicle. Ask one of our friendly staff for more information.



Gain peace of mind with Mechanical Breakdown Insurance. **Ask us how.**



Top features

- » 16 Valve
- » Central Locking
- » EFI
- » Electric Mirrors
- » Electric retractable M...
- » Immobiliser
- » Indicator on side mirr...
- » Power Steering
- » Rear Wiper
- » Reversing Camera
- » Smart key

Body Style
5 door, Hatchback

Odometer
55,098 km

Engine
1498 cc, Internal Combustion

Fuel Type
Petrol

Transmission
Auto, Front Wheel

Wheels
15", Wheel Caps

VIN
-

Interior
Beige, HALF LEATHER

Safety



Based on 2023 UCSR rating for 06-13 models

Reg No.
HQH788

Ext Colour
Silver

History
Ex-Overseas

Seats
5 seats, Semi Leather

CO2 Emissions
★★★★☆
157 grams/km

Energy Economy
★★★★☆☆
Annual fuel cost of \$2,590
6.6L per 100km

Cost per year is an estimate based on petrol price of \$2.80 per litre and an average distance of 14000 km. Emissions and Energy Economy figures standardised to 3P WLTP.

Stock ID: 543753



New Age Cars | Phone 09 2761000 | Email info@newagecars.co.nz
209 Great South Road, Opposite to Otahuhu Police Station, Otahuhu, Auckland
1062, New Zealand
www.newagecars.co.nz

