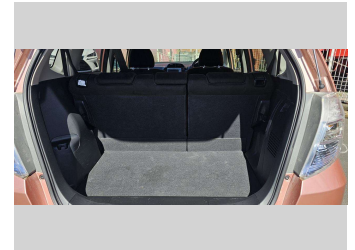
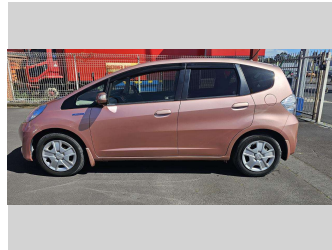
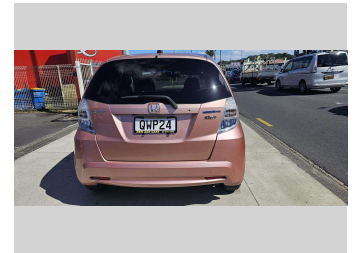
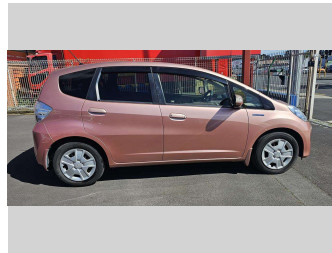
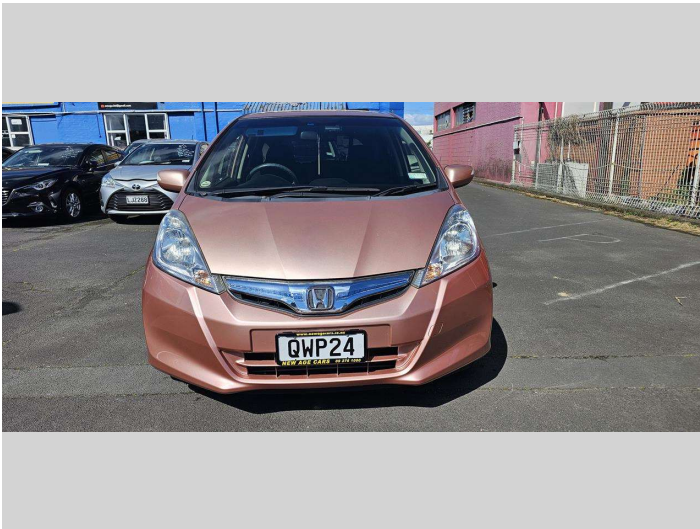


# 2012 Honda FIT Hybrid




**Purchase Price** **\$9,490**  
Includes GST, Registration & Licensing

Finance may be available on this vehicle. Ask one of our friendly staff for more information.



Gain peace of mind with Mechanical Breakdown Insurance. **Ask us how.**



**Top features**

- » 16 Valve
- » 4 cylinder
- » Air Conditioning
- » AUX/ USB Port
- » Car Alarm
- » Central Locking
- » Child seat anchor poin...
- » Climate Control
- » Cruise Control
- » Digital Display
- » Electric Mirrors
- » Electric retractable M...
- » Electric Windows
- » Immobiliser
- » Power Steering
- » Rear Wiper
- » Remote Locking
- » Reversing Camera

Body Style  
**5 door, Hatchback**

Odometer  
**71,684 km**

Engine  
**1339 cc, Hybrid Petrol**

Fuel Type  
**Hybrid**

Transmission  
**CVT, Front Wheel**

Wheels  
**15", Wheel Caps**

VIN  
**7AT08G2YX23216790**

Interior  
**Brown, BLACK**

Safety



Based on 2023 UCSR rating for 08-14 models

Reg No.  
**QWP24**

Ext Colour  
**PINK**

History  
**Ex-Overseas**

Seats  
**5 seats, Fabric**

CO2 Emissions  
**★★★★☆**  
**113 grams/km**

Energy Economy  
**★★★★☆☆**

**Annual fuel cost of \$1,840**  
**4.7L per 100km**

Cost per year is an estimate based on petrol price of \$2.80 per litre and an average distance of 14000 km. Emissions and Energy Economy figures standardised to 3P WLTP.

**Stock ID: 751124**



New Age Cars | Phone 09 2761000 | Email info@newagecars.co.nz  
209 Great South Road, Opposite to Otahuhu Police Station, Otahuhu, Auckland  
1062, New Zealand  
www.newagecars.co.nz

