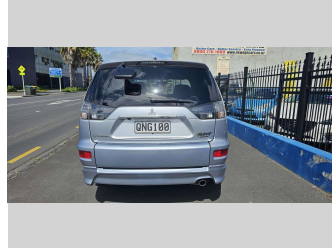
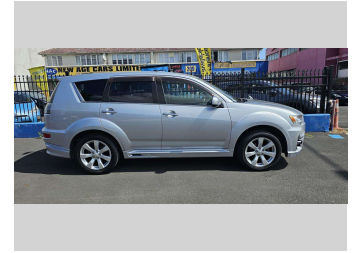
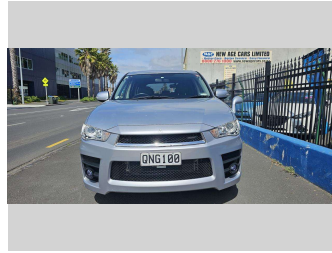



# 2011 Mitsubishi Outlander 7 SEATER




**Purchase Price** **\$15,990**  
Includes GST, Registration & Licensing

Finance may be available on this vehicle. Ask one of our friendly staff for more information.



Gain peace of mind with Mechanical Breakdown Insurance. **Ask us how.**



- Top features**
- » 16 Valve
  - » 4 cylinder
  - » Air Conditioning
  - » Alloy wheels
  - » Central Locking
  - » Child seat anchor poin...
  - » Climate Control
  - » Digital Display
  - » Electric Mirrors
  - » Electric retractable M...
  - » Electric Windows
  - » Immobiliser
  - » Indicator on side mirr...
  - » ISOFIX Seats
  - » Power Steering
  - » Rear Wiper
  - » Reversing Camera

Body Style  
**5 door, SUV**

Odometer  
**63,027 km**

Engine  
**1998 cc, Internal Combustion**

Fuel Type  
**Petrol**

Transmission  
**Auto, Front Wheel**

Wheels  
**17", Factory Alloys**

VIN  
**7AT0CJ3MX24000253**

Interior  
**Black, BLACK**

Safety



Based on 2023 UCSR rating for 06-12 models

Reg No.  
**QNG100**

Ext Colour  
**Silver**

History  
**Ex-Overseas**

Seats  
**7 seats, Fabric**

CO2 Emissions  
**★★★★☆**  
**206 grams/km**

Energy Economy  
**★★☆☆☆**

**Annual fuel cost of \$3,370**  
**8.6L per 100km**

Cost per year is an estimate based on petrol price of \$2.80 per litre and an average distance of 14000 km. Emissions and Energy Economy figures standardised to 3P WLTP.

**Stock ID: 543748**



New Age Cars | Phone 09 2761000 | Email info@newagecars.co.nz  
209 Great South Road, Opposite to Otahuhu Police Station, Otahuhu, Auckland  
1062, New Zealand  
www.newagecars.co.nz

